

# CHURCHGATE AREA ASSOCIATION

Established 2002

🌸 NEWSLETTER 🌸

🐣 Number 74

Spring 2023 🐣

[www.churchgateassoc.org.uk](http://www.churchgateassoc.org.uk)

The Association promotes the interests of all residents, businesses and property owners, not only in Churchgate Street, but also in the general area of all those streets that lead directly off it.

**Editor: Nick Law.** For future articles, comments, etc. please contact [nicklaw1@hotmail.com](mailto:nicklaw1@hotmail.com)

## SOCIAL EVENING

**Friday 21st April 2023 7.00pm at the Unitarian Meeting House**

Come and hear Edward Crichton from Lacy, Scott & Knight entertain us with his vast knowledge of Auctioneering in an amusing illustrated talk entitled:

### **An Auctioneer's Lot**

Edward will speak for 30 minutes or so and then will answer questions. Our upmarket nibbles and wine will be served as usual after the meeting.

*Free to CAA members. New members can join for £3 on the door.*

## **Hurrah!**

**The Coronation Street Party will take place on Sunday May 7th.**

**On January 9<sup>th</sup> this year we had reached the Last Chance Saloon as far as running the Street Party was concerned as we had to apply by the 31<sup>st</sup> January for a West Suffolk Council Locality Grant to put towards the running of the party. No-one in the Grid had indicated that they were happy to organise the day.**

**Then, wonders will never cease, the wonderful Patricia Clifton of 7 Bridewell Lane agreed to take up the challenge. By this time it was the 18<sup>th</sup> January and I was arriving**

home from Geneva and Patricia and her husband were about to jet off to the Gambia. On 19<sup>th</sup> January Patricia and I had a breakfast meeting and I handed over the comprehensive Street Party manual which had been produced by last year's sub-committee and kindly co-ordinated by Michael Watson who is the IT King.

Therefore the party will take place in Whiting Street South on Sunday 7 May between 3.00 and 5.00pm. Put the date in your diary and come and join in the fun

## **STOP PRESS!**

### **A Crown for a King in Crown Street in Bury St. Edmunds the Jewel in the Crown of Suffolk**

A large floral crown is being created by Bury in Bloom to mark the Coronation. It will be a 2.7 metres high semi-circular structure weighing 750kgs made of rolled steel powder-coated gold with 15 hanging baskets attached to represent the Jewel in the Crown.

The Floral Crown will be placed on the corner of Crown Street and Honey Hill on the patch of grass outside 9/10 Crown Street which will be transformed into a 15 square metre flower bed closely planted with red and white geraniums. It will be installed in late April.

## **IT SHOULD BE FABULOUS**

### **Churchgate Area Association - Meeting with Councillors and Suffolk County Council Officials 2 March 2023**

*The CAA was grateful to Suffolk Councillor Councillor, Richard Rout, for putting together a meeting enabling four CAA committee members to meet six top officials from the County Council to discuss Air Quality and EV charging in the Grid, and the 30 extra residents' parking spaces.*

*Those attending were: Cllr. Paul West, SCC Cabinet member for Operational Highways and Flooding. Cllr. Robert Everitt SCC and WSC Cllr. Richard Rout SCC and WSC. Council Officers: Andrew Cook, Head of Growth, Highways and Infrastructure. Graeme Mateer, Head of Transport Strategy Matt Hullis, Head of Environmental Strategy*

*Geoffrey House, Cathy Friel, Paget Fulcher and Vivien Gainsborough Foot from the CAA attended*

#### **Electric Vehicle (EV) Charging.**

Geoffrey House concentrated on the challenge for people living in the medieval grid to charge EVs, when most of the houses were not suitable for home charging. No charging points were currently available within the grid, but lamp post charging units were located in Southgate Street and Sparhawk Street.

The Local Electric Vehicle Infrastructure (LEVI) pilot scheme, with funding, was available to SCC. The scheme was intended to increase the availability of on-street charge points, ensuring that on-street parking was not a barrier to owning an EV. The council response acknowledged the availability of LEVI funding, but said that the priority was for rural areas where EV charging points were not provided.

On-street charging using lamp posts was an option, but there were challenges because,

where they have been located in resident permit parking zones, it was not possible to prevent non-electric cars from parking adjacent to the charging point. The uncertainty of parking, together with extended charging time, possibly up to 18 hours, made lamp-post chargers an unattractive option.

The development of EV chargers, and car batteries, however, was expected to move swiftly. More rapid-charge units, where vehicles can be charged in less than 60 minutes, were being installed in off-street locations such as car parks or superstores, such as Waitrose and Tesco. As electric vehicles develop and become more widely used, it is believed that personal charging plans would be developed, particularly when rapid charging becomes the norm.

Suffolk County Council is also looking to develop business links with companies, to enable more commercial charging units to be installed at suitable locations. Existing petrol stations, for example, could become charging hubs.

The provision of on-street lamp post charging units within the CAA area was unlikely. This should be off-set, however, by the availability of off-street rapid charging units within reasonable distance of houses in the Grid. It is recognised that residents may have to go to public car parks such as Ram Meadow and supermarkets to charge their vehicles rather than being able to access chargers closer to hand.

### **Air Pollution and Public Health**

Cathy Friel spoke briefly about the health harms of air pollution and the fact that West Suffolk has the highest prevalence (percentage of people in a population) of asthma and Chronic Obstructive Pulmonary Disease in Suffolk.

Most of the sources locally are beyond the control of residents. The Council's main strategy is to encourage the use of EVs. Cathy distributed a hand-out to the

attendees with further information. This is available on the CAA website.

### **30 extra residents' parking spaces**

Progress does appear to have been made regarding the 30 additional spaces, and Mr. Mateer confirmed that he would be in touch shortly regarding the extra spaces once a minor design issue had been resolved between SCC and its contractor.

### **Policing of the 20mph zone in the town centre**

The 20mph zone in the town centre was mentioned, and SCC highways would be prepared to monitor streets in the Grid to check speeds in locations where it is thought speeding occurs; but there is no easy solution to this problem as the police have insufficient resources and 20mph is only advisory. Cllr Everitt again reiterated that the 20mph sign will be reinstated on the 'gateway' outside St. Mary's church.

### **Pedestrianisation of the Market Place**

The CAA has been campaigning for many years to enable the pedestrianisation of the Market Place. Once the Market Place is for pedestrians only (apart from disabled drivers) there will be an immediate reduction in drivers using Crown Street, Churchgate Street, and Guildhall Street to access Buttermarket and Cornhill which will be hugely beneficial. WSC is in charge of this decision and a meeting could be held in June to consider this further following the local elections. Cllr Richard Rout noted that the work on the new Local Plan had been delayed and inclusion in the Plan would be an appropriate way of achieving the pedestrianisation.

### **High Baxter Street**

Although not in the Grid, it was noted that the surface of High Baxter Street is appalling and dangerous. It was agreed that Andrew Cook should urgently look at arranging for the resurfacing of this street.

**A NOTE FOR YOUR DIARY:** Thursday 04 May is West Suffolk Council election day. Please make every effort to vote as the future of our lovely town depends on us electing the best councillors for the task.

**BURY UNITARIAN MEETING HOUSE SEEKING “TLC” FROM WELL-WISHERS – PLUS SOME SPECIFIC HELP. Rev. Matthew Smith**

Almost certainly you know OUR Grade 1 Listed Meeting House on Churchgate Street – Bury St Edmunds Unitarian Meeting House, built in 1771. I have the privilege of having been Minister at the Meeting House since October 2014, although I live in Framlingham (where I also minister at another delightful early eighteenth-century Meeting House, alongside the Town Library).

Perhaps you visit Bury Meeting House for a yoga class, or to listen to classical music. Maybe you have hired the building in the past for a

source for the local community in many ways.

To keep the doors open to this beautiful building, every kind of support is welcome AND vitally needed. Only through having as many people as possible who care in practical ways will we survive and keep this glorious and frankly unique space open to the public for the wonderful events that take place here. I am happy to chat with anyone who would like to find out how they can help out – such as by becoming a Friend.



family function. We play host to the Bury Literature Festival, and of course the AGM of Churchgate Area Association. The building is a re-

At this time, we also have a particular request. We are seeking a volunteer with financial management skills – not to do accountancy work but to give us some advice on restructuring. If that person has specific knowledge of charity finance procedures that would be even better – but it's not essential.

Specifically, we are looking to change our governance structures so we can slim down the volunteer treasurer role and professionalise as necessary. We are seeking conscientious assistance in



working through that process. The volunteer would be asked to serve on a working group. I stress this does not imply ANY ongoing commitment beyond the life of that working group!

Would you like to find out more?  
Please contact me. My email:

### Weekly Events at the UMH

Mondays - VivaVoices Community Choir  
1.30pm - 3pm

Tuesdays - VivaVoices Community Choir  
7.30pm - 9pm

Want to know more? Call 01284 700286 or  
check out [www.vivavoices.com](http://www.vivavoices.com)

Every Monday and Thursday evening, Yoga  
with Lizzie 6pm - 7.30pm

Call 07807062409 or email [lizziesummer-s8@yahoo.com](mailto:lizziesummer-s8@yahoo.com)

**Coming soon.....**Carer and Toddler  
Group, Social Club, Repair Cafe, Spooky  
Sleepover Parties and much, much more.

If you would like to hire the venue or you  
would be interested in becoming a Friend of  
the building, please contact Amanda  
07850452697

### APRIL DIARY AT UMH

Saturday 1st and 29th - Little Makers Market.

Sunday 2nd and 16th, 2 - 5.30pm - Unitarian Service. Interested in joining the congregation?  
Contact Rev. Mathew Smith on 07964632046.

Saturday 15 April, 10.30 - 12 - Gardening Work Party (see above for details)

[revmatt1774@outlook.com](mailto:revmatt1774@outlook.com) . I look  
forward to hearing from you.

It is folks that care who will secure  
the future of this remarkable and na-  
tionally significant building well into  
the future.

Every Wednesday evening, Meditation with  
Stephanie 7.00pm - 8.15pm  
Call 07950 181738 or email [hello@feather-lightliving.com](mailto:hello@feather-lightliving.com)

Every Thursday morning, Beginners Yoga  
with Jordanna 9.30am - 10.30am

Call 07500 978042 [jordannaoffersyoga.offeringtree.com](http://jordannaoffersyoga.offeringtree.com)

Sundays - Yoga with Amber 9am - 10pm  
Call 07983573157 or email  
[ambersparkle84@gmail.com](mailto:ambersparkle84@gmail.com)

Could you possibly spare a few hours to  
share some gardening know-how and pos-  
sibly some spare plants at our Gardening  
Work Party on Saturday 15 April from  
10.30am? We will reward your community  
spirit with homemade refreshments. Contact  
Amanda on 07850452697.

## The Crown of Thorns

Steve Jones

The Crown has now been installed in the Cathedral. It has been raised into the tower using a new winch mechanism capable of taking the weight of 65kg. The Crown is made of stainless steel and the upward pointing tips are coated with gold leaf.



## All aboard the award-winning Bury Bike Train!

Libby Ranzetta

Since its launch in September last year, up to this Easter, the Bury Bike Train will have made 140 journeys to and from town centre primary schools, with over 500 'passengers'. It recently won the Green Community award in Suffolk's Creating the Greenest County 2023 awards, being described by the judging panel as 'an exciting

and active new initiative, involving families, reducing traffic, and encouraging alternative transports'.

Run by the Grid-based community business EcoCarriers BSE, the Bike Train project provides cycle training, bike loans and protected group cycle rides to make it as easy as possible for families to leave the car at



home and cycle to school instead. The routes are the 'Southern', from the Nowton estate, which runs to and from school every Monday; the 'Great Western' from Ridley Road (Thursdays); and the 'Great Northern' from Marham Park via the Howard estate (Fridays). A fourth route - the 'Great Eastern' - from Moreton Hall proved unpopular and has been suspended for the time being.

Trains run to a timetable along these routes, with families joining by bicycle along the way. WhatsApp's location-sharing function enables parents to see where the Train is (and whether they have missed it!). The routes have been chosen to make the most of cycling infrastructure where possible, and to minimise travelling on the busiest roads.



*Homeward bound: The bike train gets ready to depart from St Edmund's Primary School*

Most of the children who use the Bike Train at present are pupils at St Edmund's School in Westgate Street. The aim is eventually to provide Bike Trains for all primary schools in the town that want them, but St Edmund's and Guildhall Feoffment were targeted initially because they suffer the worst air quality, and concomitant traffic congestion at the school gate.

There are other Bike Trains elsewhere in the UK but ours appears to be the only one that goes to *and* from school, and runs at least three days a week. The norm seems to be once a month, on a Friday morning, so Bury is, as ever, punching above its weight.

Apart from Creating the Greenest County awards, the project has caught the attention of the University of Suffolk, which is providing academic support this summer to help us assess the impact of our activities - not just in terms of changes in air quality, but also in behaviour change (ie are more families doing the school run by bike rather than car as a result of the Bike Train).

We have seen already the difference the Bike Train has made to some people. Whilst it's true to say that the first passengers - the 'early adopters' - were regularly cycling to school anyway, many others who join in now are cycling to school for the first time. The children love it; it is the parents that need persuasion usually. We welcome guests on the Bike Train, and a Suffolk County Council officer who joined us one day told us it gave her the confidence to ride in her home town, and she has cycled many happy miles since.

### **Community Bike Train and Bike Library**

We found that nearly half the children turning up for our Learn to Ride training sessions that support the Bike Train did not have a bike; nor did many of the parents. It can be expensive replacing a child's bike everytime the child grows out of it and our small stock of loan bikes was in great demand for these sessions. Thanks to locality funding from Cllrs Wakelam, Beckwith, Waterman and Rayner we have acquired more bikes (including donated machines) and garaging in Mill Road to store them. For a one-off fee of £30 or your old bike, anyone can join the library and have a refurbished bike to keep forever, or swap for a bigger/different one as required, and at no additional charge. This is already proving popular and keeping us busy with the spanners and inner tubes.

A locality grant from Cllr Whittingham is supporting the roll-out of the Community Bike Train project for adults, which started in March with two On Your Bike cycle

training sessions designed to instil more confidence in riders who want to ride in town. Feedback has been encouraging. One participant said after the training “I never thought after 20 years I could ride a bike again. I can now go on lots of family adventures and improve my health.”

## The Rewards For Determination

The doorbell rings and it's our Postman, Richard, with an odd shaped package. It's addressed to Mary so I take it up to her. “Oh good” she says, “I've been waiting for this, it's my skipping rope”

And so my career as a video cameraman was about to begin.

Mary had decided to take up the challenge of doing 100 skips a day throughout February and post a video of her doing this on social media to try and raise money for Cancer Research UK.



We have a number of friends and relatives who are having treatment for cancer or are in remission. We have also lost numerous people to this horrible disease so I was more than happy to help Mary, and each day Mary would dedicate her skipping to one of these people.

On February 1st, we find a nice flat area in

We hope the Bike Train will become a familiar (and welcome) sight in the Grid as we all try to reduce our detrimental impact on the environment. More details at [ecocarriersbse.co.uk](http://ecocarriersbse.co.uk), [hello@ecocarriersbse.co.uk](mailto:hello@ecocarriersbse.co.uk) or 01284 413441

## Robin Barratt

the sunshine and after a good stretching session to warm up, Mary started her skipping. It turned out to be a bit of a false start with only 10 skips completed before the rope got tangled in her legs! But after 2 more skipping sessions, the first 100 skips were ‘in the can’ (thank goodness!) and ready to post on Facebook.

This daily routine continued for days 2 to 11, with the donations in support steadily growing thanks to the generosity of those viewing the videos, BUT the skipping was taking its toll, especially on Mary's back and knees. Having already received over £900 in donations, Mary was desperate to complete her challenge and decided that as she was still very sore, day 12 would be a rest day from skipping, with the intention of making up the 100 over the rest of the month. Day 13, and it was obvious that skipping was still not going to be possible but Mary was determined to complete a daily challenge so decided she would do 10,000 steps a day instead. This might not seem a lot to some of you but as Mary's daily average was only 5,000, with some days being under 2,000, this was going to take some doing. Ever determined, by 10pm Mary had completed over 11,000 steps!

For Days 14 to 21, walking replaced skipping and Mary was very humbled as donations rose to over £1,200!

Day 22 and Mary decided to try skipping again and was thrilled to complete 71 skips in one go! The rest had been worth it, and for good measure, over 10,000 steps completed too!

A combination of skipping and walking sessions continued for days 23 to 27 with the number of skips completed in a single session increasing most days, with a personal best of 98 on the 25th, so close to the elusive 100 in one go, and for good measure, 10,000 steps were achieved each day as well.

Its the 28th February, the last day and Mary is determined to reward all the donors with 100 skips in one go.

We get set up, me with the phone camera and Mary with the skipping rope. I count her in, 1, 2, 3 Go! and I start filming whilst silently counting each of the jumps. The tension mounts as I count 97, 98, 99 and then 100, but it doesn't stop there, Mary continues on. I start to wonder if I've miscounted but no, I wasn't mistaken, 120 in one go and Mary is almost in tears from having completed her challenge.

As I write Mary is still beaming, having learned that her employer will match the money she has raised, resulting in Cancer Research UK receiving £2,920 (plus some Gift Aid), a magnificent reward for Mary's determination.

I am so proud of my wife.

## Homeless charity appeals for donations to help fund future dental sessions.

The Community Dental Services visited Bury Drop In for its third visit on Tuesday 14th February. After the charity initially funded two visits – provided by Community Dental Service, it became apparent that a third session was required due to high demand. Over the three sessions, emergency treatment has been provided to 32 people in severe dental pain; of which five women and one man needed dentures. The project has received praise from the NHS health outreach team and West Suffolk Council rough sleeper service.



*Photo curtesy of Bury Free Press*

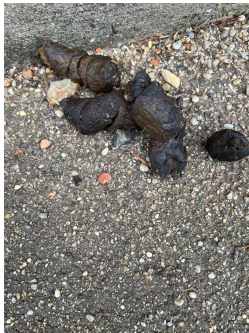
Bury Drop In needs funding to deliver additional dental sessions and is looking for donors and long-term sponsors to finance the project. If you are interested in supporting this, please get in touch by sending an email to [info@burydropin.org](mailto:info@burydropin.org) or visit the webpage [www.burydropin.org/donate](http://www.burydropin.org/donate).





**CONGRATULATIONS** to Hayward Moon, solicitors, in Whiting Street for winning the “Best Dressed Christmas Window” competition with considerable help from the children of St Edmund’s Primary School.

### **We are Appalled.....I hope you, the dog owner, are ashamed**



To our horror, too many times we have encountered dog mess on our pavements but this time we had to publicise it as it was one step too far.

A lady from College Street said that she is always cleaning up dog mess in College Street and I am sure she is not the only kind hearted, neighbourly person in the Grid who is doing just this.

This mess was found on Thursday 30 December outside the United Reform Church in Whiting Street; obviously from a large dog and no effort at all had been made to remove it. It’s completely disgraceful and unacceptable. And another mess in College Lane found on 11 February.

**Who is letting their dogs foul the footway like this? It’s completely unacceptable. I hope these dog owners are thoroughly ashamed. VGF**

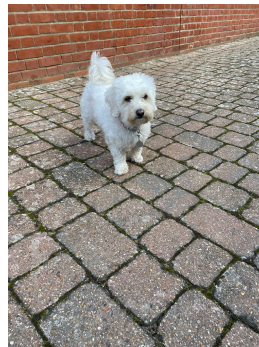
### **And now, finally, more Dogs in the Grid**



*Frida, coming soon to Guildhall Street*



*Coco from College Street*



*Luna from Bridewell Lane*



*Axl from Whiting Street*

## **YOUR COMMITTEE 2022-23**

**Vivien Gainsborough Foot, Chairman, 69 Whiting St. 750887 or 07769756249**

**[vgf.masongill@gmail.com](mailto:vgf.masongill@gmail.com)**

**Nick Law, Newsletter Editor, 35 Guildhall St. 07912648138**

**[nicklaw1@hotmail.com](mailto:nicklaw1@hotmail.com)**

**Brian Jones, Planning, 8 Hatter St. 762342 [brian.hessett@hotmail.co.uk](mailto:brian.hessett@hotmail.co.uk)**

**Nick Moon, Treasurer, 58 Churchgate St. 07809 687536 [nick@moon.me.uk](mailto:nick@moon.me.uk)**

**Judy Broadway, Membership/Website, 68 Whiting St. 724034**

**[caainfo@btinternet.com](mailto:caainfo@btinternet.com)**

**Cathy Friel, Licensing, Minute Secretary, 42 Crown St. 755549**

**Geoffrey House, Air Quality, 8 William Barnaby Yard, 07826 852145.**

**Paget Fulcher, Traffic and Parking, 7a Bridewell Lane, 07857424504,**

**[pagetf@gmail.com](mailto:pagetf@gmail.com)**



**[facebook.com/ChurchgateAreaAssociation](https://facebook.com/ChurchgateAreaAssociation)**

*Image of the Norman Tower reproduced with the kind permission of Kim Whittingham.  
[www.kimwhittingham.co.uk](http://www.kimwhittingham.co.uk)*

