

# Air Pollution and Public Health

Churchgate Area Association February 2023

# Air Pollution in CAA Area

- Localised Air Pollution is a daily concern for residents, most noticeably in the street from idling vehicles, but it is also an invisible health harm - see slide 3
- Statistics from GP records in the Healthy Suffolk report 'When we get ill: respiratory diseases' confirm that West Suffolk has the **highest prevalence** of Asthma and Chronic Obstructive Pulmonary Disease (COPD) in Suffolk – see [healthysuffolk.org.uk](http://healthysuffolk.org.uk) and slides 4 and 5. Short term increases in air pollution, hours or days, can trigger worsening of symptoms of these conditions, resulting in increased discomfort for patients and demands on NHS services.
- Bury St Edmunds is a high pollution area – see slide 6
- Main sources of pollution - A14, local and through traffic and industrial pollution - see slide 7
- Residents can help reduce pollution by reducing car use and switching to EVs, which is one of West Suffolk Council's main strategies for improving air quality. Other sources are beyond our control.

# Air pollution affects people throughout their lifetime



## Pregnancy

low birth weight



## Children

asthma  
slower development of lung function  
development problems  
more wheezing and coughs  
start of atherosclerosis



## Adults

asthma  
coronary heart disease  
stroke  
lung cancer  
chronic obstructive pulmonary disease (as chronic bronchitis)  
diabetes



## Elderly

asthma  
accelerated decline lung function  
lung cancer  
diabetes  
dementia  
heart attack, heart failure and strokes

# Suffolk Asthma prevalence highest in West Suffolk

## Healthy Suffolk



Table 8: [GP recorded prevalence of asthma among individuals of all ages, CCGs, East of England, England, 2020/21](#)

Geographical area	GP registered prevalence of asthma	
	Number	Prevalence
Ipswich & East Suffolk CCG	27,470	7.01%
Great Yarmouth & Waveney CCG	75,885	7.47%
West Suffolk CCG	18,227	7.45%
East of England	425,308	6.49%
England	3,629,071	6.38%

(CCG – Clinical Commissioning Group)

# Suffolk Chronic Obstructive Pulmonary Disease prevalence highest in West Suffolk

## Healthy Suffolk



Table 1: [GP recorded prevalence of COPD among individuals of all ages, CCGs, East of England, England, 2020/21](#)

Geographical area	GP registered prevalence of COPD	
	Number	Prevalence
Ipswich and East Suffolk CCG	7,566	1.82%
Norfolk and Waveney CCG	24,824	2.31%
West Suffolk CCG	5,960	2.30%
East of England	128,321	1.83%
England	1,170,437	1.93%

# Indices of Deprivation 2019

## Overall Air Quality Score

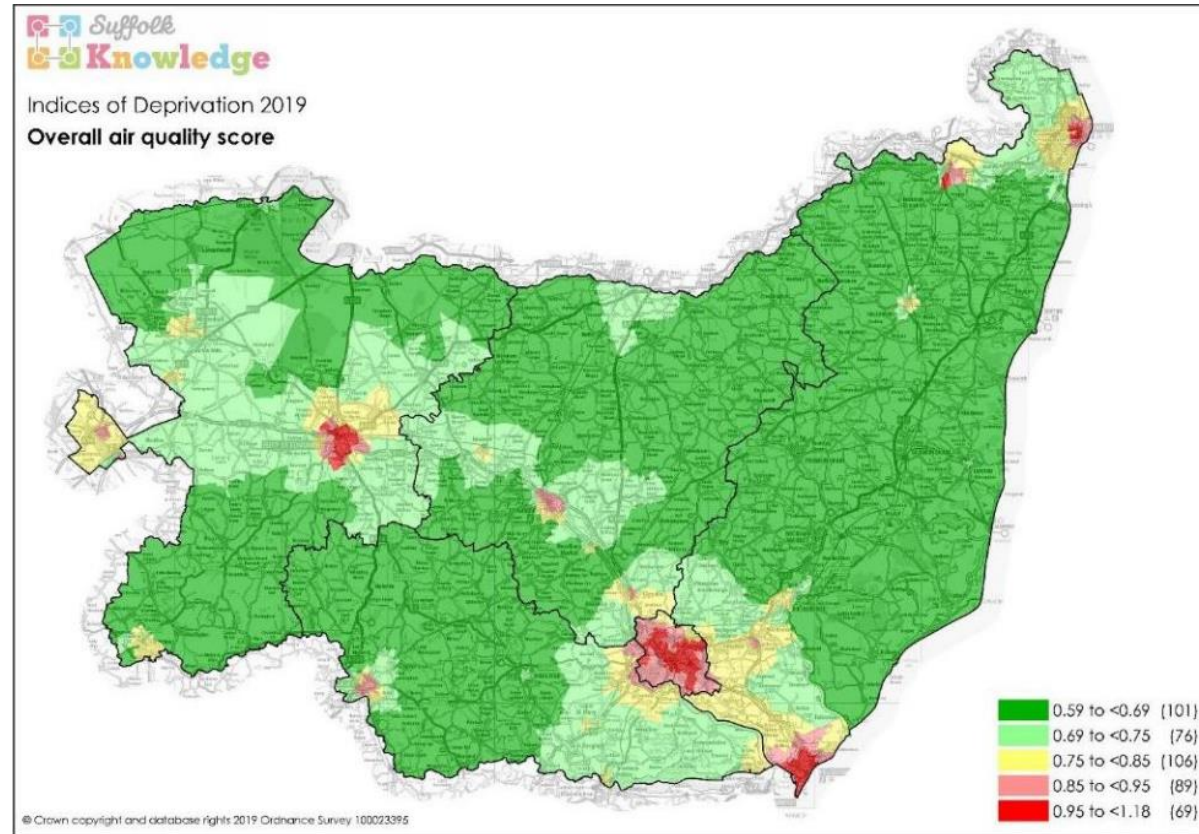
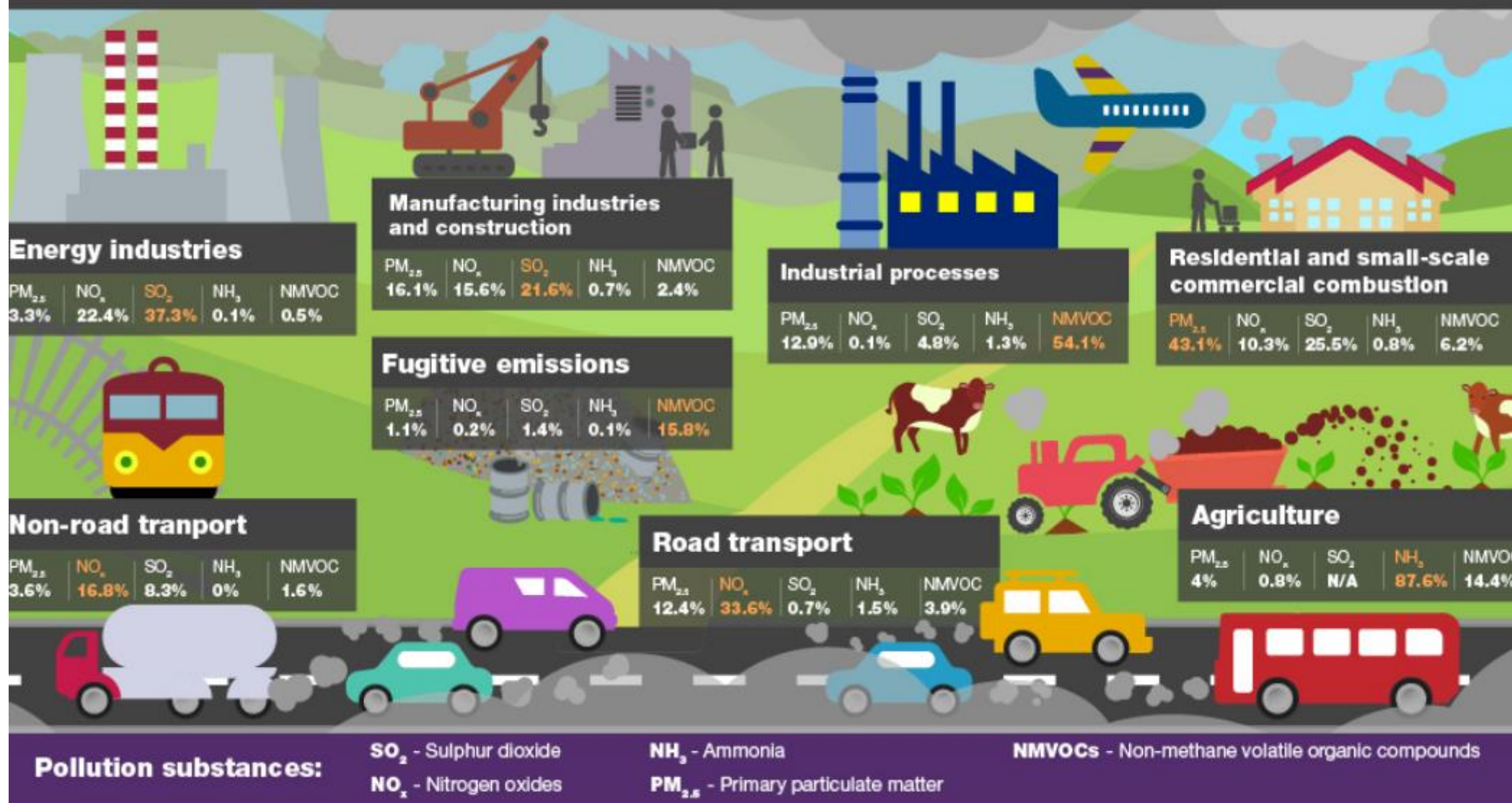


Figure 4 Indices of Deprivation 2019: Overall air quality Score (based on concentrations of four pollutants: nitrogen dioxide, benzene, sulphur dioxide and particulates) data published by the UK Air Information Resource (18)



# Sources of air pollution



# Churchgate Area Association (known as CAA) and Air Quality

Website: [www.churchgateassoc.org.uk](http://www.churchgateassoc.org.uk)

- The CAA represents all residents and businesses in the Medieval Grid area of Central Bury St Edmunds – Current membership 325
- Communicates with West Suffolk and Suffolk County Council on issues of importance to members e.g. Traffic, Parking and Air Quality
- 2013 – Commissioned a study and report for BSE Vision 2031 - The report entitled 'Reducing Car Usage in the Town Centre' is on our website
- 2013 – Air Pollution in the town centre issue raised at Vision 2031 public meeting
- 2019 – Represented on the Air Quality Group set up and supported by West Suffolk Council
- January 2022 – Organised EV Survey to gauge the need for on-street chargers
- March 2022 – Presented EV Survey results to the Air Quality Group with a request that the Council apply for Local Electric Vehicle Infrastructure funding to pilot the installation of EV chargers in the Medieval Grid
- November 2022 – Attended Air Quality Challenge Lab at University of Suffolk



# Working Together to Reduce Air Pollution

- On 21 March 2019 councillors at Suffolk County Council voted to declare a climate emergency
- On 11 July 2022 the British Medical Journal editorial was entitled 'Air Pollution is a public health emergency'. This was following the publication of the *Prevention of Future Deaths* after air pollution was listed as contributing to the death of Ella Adoo-Kissi-Debrah.
- The CAA are investigating setting up the equivalent of Ipswich CAN (Clean Air Now) for Bury
- We need to work together to ensure that lack of on-street chargers will not be a barrier to our residents owning an EV
- We need to discuss a new Transport Strategy for the Historic Core Zone